

Anti-FKBP12 Rabbit Monoclonal Antibody
Catalog # ABO13872

Specification

Anti-FKBP12 Rabbit Monoclonal Antibody - Product Information

Application	WB, IF, ICC
Primary Accession	P62942
Host	Rabbit
Isotype	Rabbit IgG
Reactivity	Rat, Human, Mouse
Clonality	Monoclonal
Format	Liquid

Description

Anti-FKBP12 Rabbit Monoclonal Antibody . Tested in WB, ICC/IF applications. This antibody reacts with Human, Mouse, Rat.

Anti-FKBP12 Rabbit Monoclonal Antibody - Additional Information

Gene ID 2280

Other Names

Peptidyl-prolyl cis-trans isomerase FKBP1A, PPIase FKBP1A, 5.2.1.8, 12 kDa FK506-binding protein, 12 kDa FKBP, FKBP-12, Calstabin-1, FK506-binding protein 1A, FKBP-1A, Immunophilin FKBP12, Rotamase, FKBP1A, FKBP1, FKBP12

Calculated MW

11951 MW KDa

Application Details

WB 1:1000-1:5000
ICC/IF 1:50-1:200

Subcellular Localization

Cytoplasm.

Contents

Rabbit IgG in phosphate buffered saline, pH 7.4, 150mM NaCl, 0.02% sodium azide and 50% glycerol, 0.4-0.5mg/ml BSA.

Immunogen

A synthesized peptide derived from human FKBP12

Purification

Affinity-chromatography

Storage

Store at -20°C for one year. For short term storage and frequent use, store at 4°C for up to one month. Avoid repeated freeze-thaw cycles.

Anti-FKBP12 Rabbit Monoclonal Antibody - Protein Information

Name FKBP1A

Synonyms FKBP1, FKBP12

Function

Keeps in an inactive conformation TGFBR1, the TGF-beta type I serine/threonine kinase receptor, preventing TGF-beta receptor activation in absence of ligand. Recruits SMAD7 to ACVR1B which prevents the association of SMAD2 and SMAD3 with the activin receptor complex, thereby blocking the activin signal. May modulate the RYR1 calcium channel activity. PPlases accelerate the folding of proteins. It catalyzes the cis-trans isomerization of proline imidic peptide bonds in oligopeptides.

Cellular Location

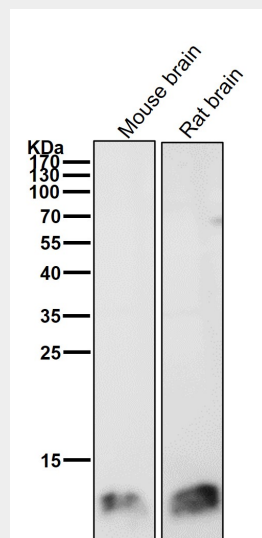
Cytoplasm, cytosol. Sarcoplasmic reticulum membrane {ECO:0000250|UniProtKB:P62943}; Peripheral membrane protein {ECO:0000250|UniProtKB:P62943}; Cytoplasmic side {ECO:0000250|UniProtKB:P62943}

Anti-FKBP12 Rabbit Monoclonal Antibody - Protocols

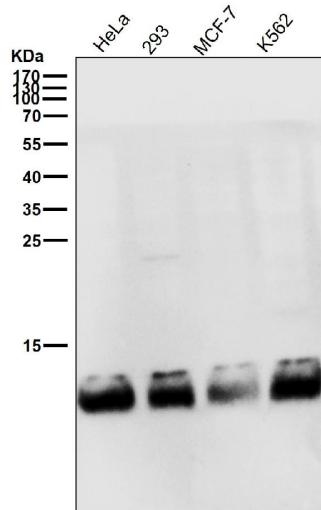
Provided below are standard protocols that you may find useful for product applications.

- [Western Blot](#)
- [Blocking Peptides](#)
- [Dot Blot](#)
- [Immunohistochemistry](#)
- [Immunofluorescence](#)
- [Immunoprecipitation](#)
- [Flow Cytometry](#)
- [Cell Culture](#)

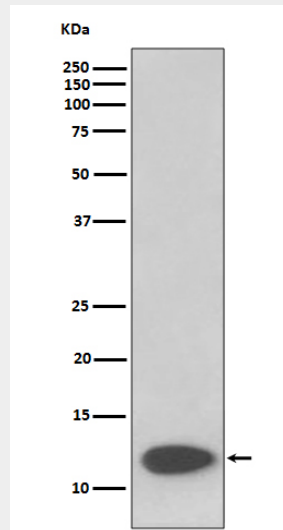
Anti-FKBP12 Rabbit Monoclonal Antibody - Images



All lanes use the Antibody at 1:2K dilution for 1 hour at room temperature.



All lanes use the Antibody at 1:2K dilution for 1 hour at room temperature.



Western blot analysis of FKBP12 expression in SH-SY5Y cell lysate.